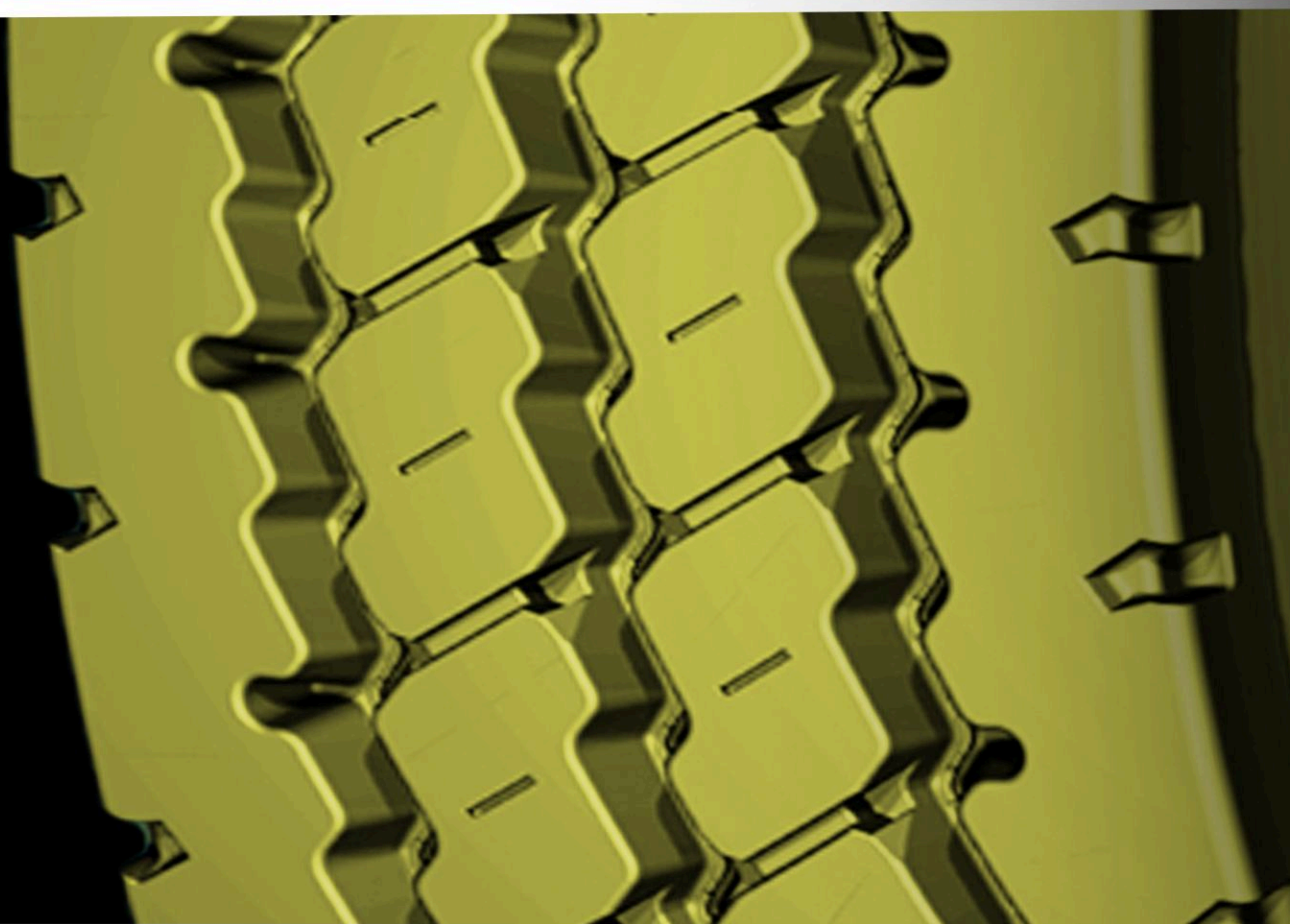


**ZEETEX**

**MAX**



**TRUCK & BUS RADIAL TYRES CATALOG  
(MAX RANGE)**

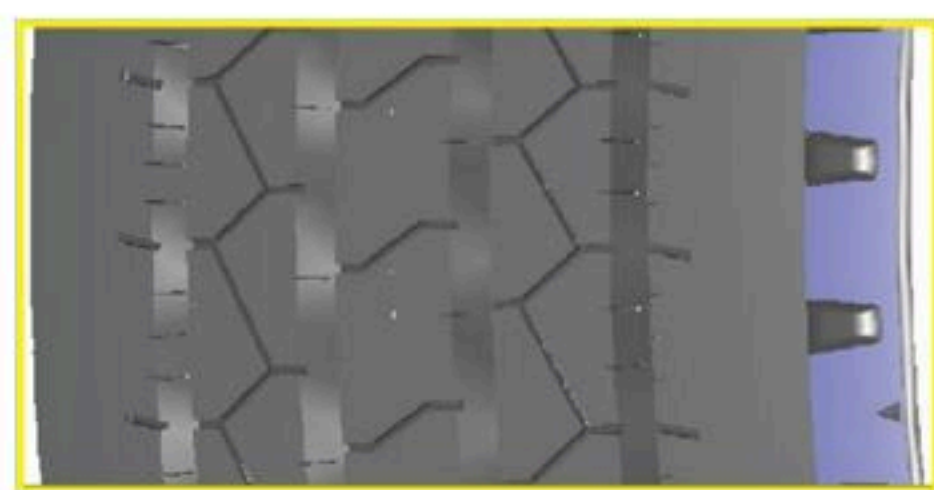


# ZSR max

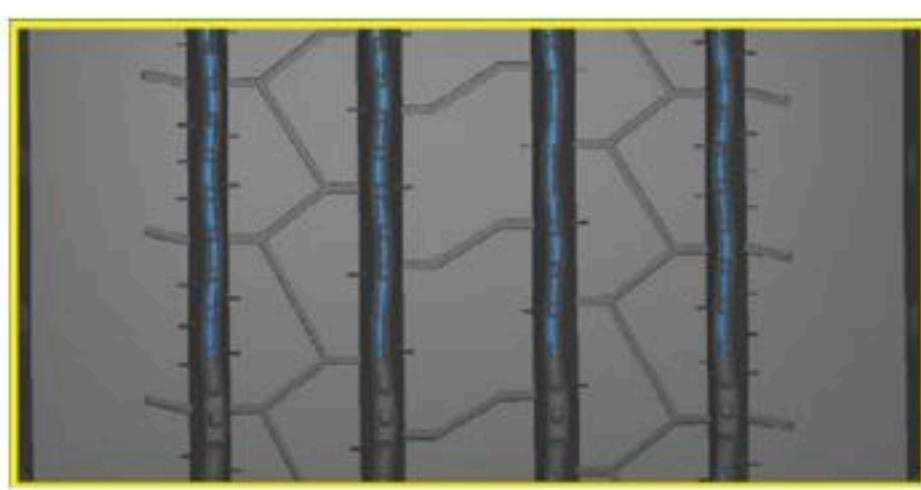
Application	Position
Highway	All Position



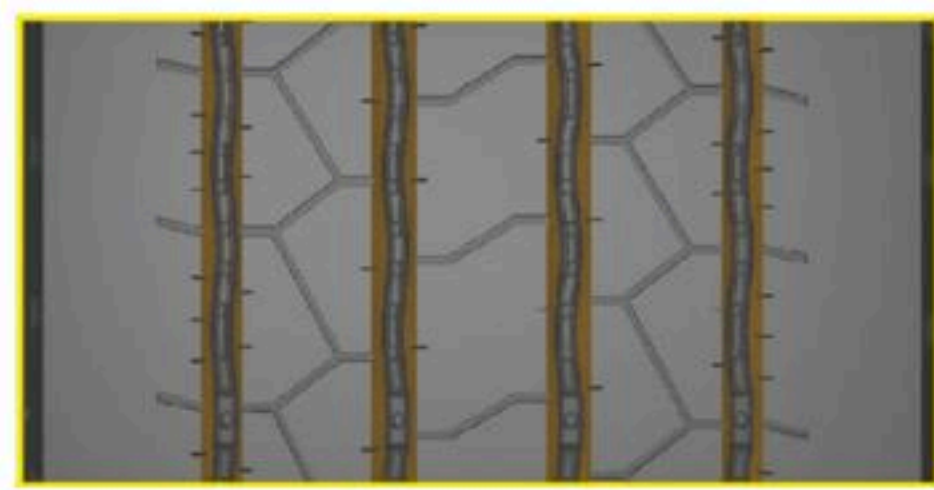
## Design Feature



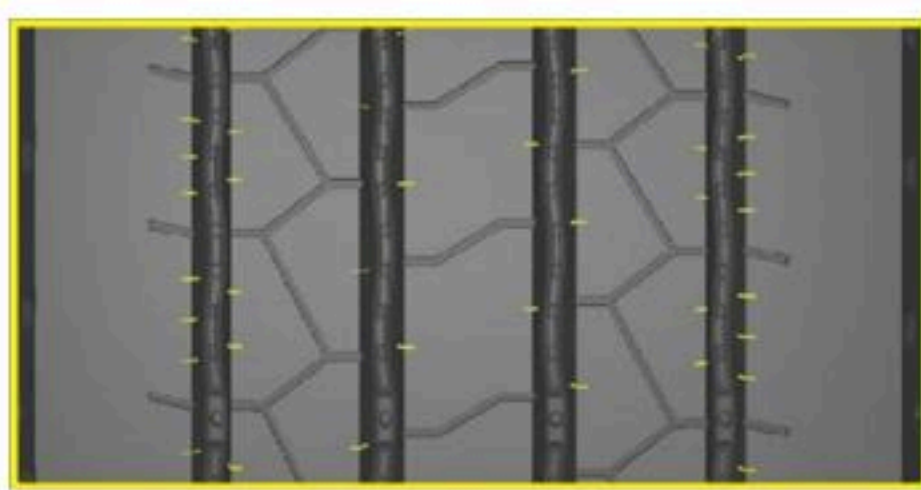
Square shoulder effectively reduces irregular wear.



Stone ejector eject stones, effectively prevent the bottom crack and protect the body.



Straight main grooves reduce rolling resistance and improve drainage and handling performance.



Miniature sipes on groove edge improve traction performance and prevents uneven wear.

Size	PR	Load Index	Speed Symbol	Maximum Load Single	Maximum Load Dual	Maximum Inflation Pressure	Rim Width	Section Width	Overall Diameter	Tread Depth
				kgs	kgs	psi	inches	mm	mm	mm
275/70R22.5	18	150/148	M	3350	3150	131	8.25	276	958	15.0
295/80R22.5	18	154/149	M	3750	3250	123	9.00	298	1044	15.0
315/70R22.5	18	156/150	L	4000	3350	131	9.00	312	1014	15.0
315/80R22.5	20	156/150	L	4000	3350	123	9.00	312	1076	15.0
385/65R22.5	20	164	K	5000		131	11.75	389	1072	16.0

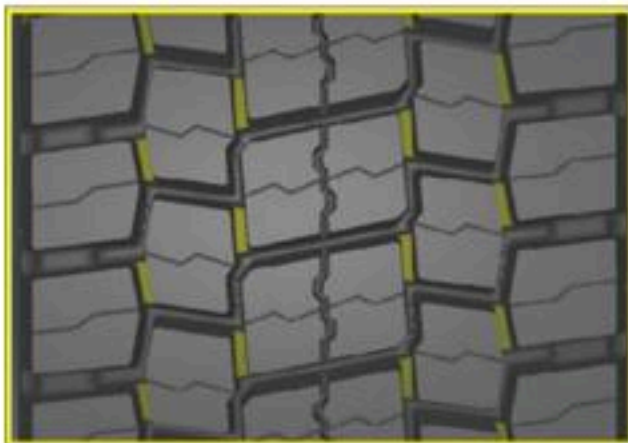


# ZDR max

Application	Position
Regional	Drive



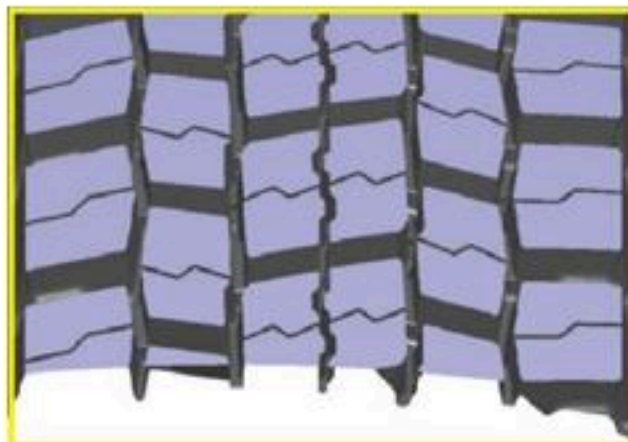
## Design Feature



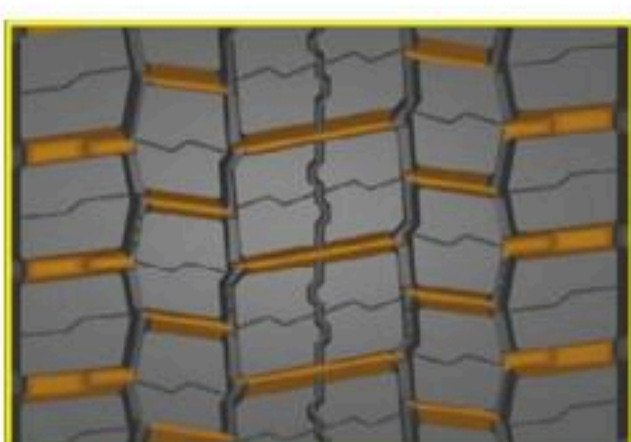
The tie-bars between the pattern blocks helps improve tread stability and reduce heel to toe wear.



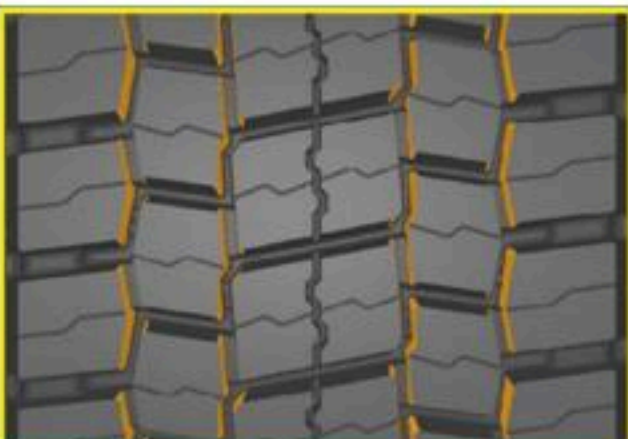
Full-depth horizontal grooves can quickly drain water into the main groove, improving the traction performance of the wet.



Wide tread and deep main groove provide excellent mileage performance.



The high density transverse grooves provide sufficient traction.



Optimized pattern groove angle design improves handling performance.

Size	PR	Load Index	Speed Symbol	Maximum Load Single	Maximum Load Dual	Maximum Inflation Pressure	Rim Width	Section Width	Overall Diameter	Tread Depth
				kgs	kgs	psi	inches	mm	mm	mm
215/75R17.5	16	126/124	M	1700	1600	102	6.00	211	767	15.0
235/75R17.5	16	132/130	M	2000	1900	112	6.75	233	797	16.0
265/70R19.5	16	140/138	M	2500	2360	112	7.50	262	867	16.0
295/80R22.5	18	152/148	M	3550	3150	123	9.00	298	1044	20.0
315/70R22.5	18	154/150	L	3750	3350	131	9.00	312	1014	21.0
315/80R22.5	20	156/150	L	4000	3350	123	9.00	312	1076	21.0

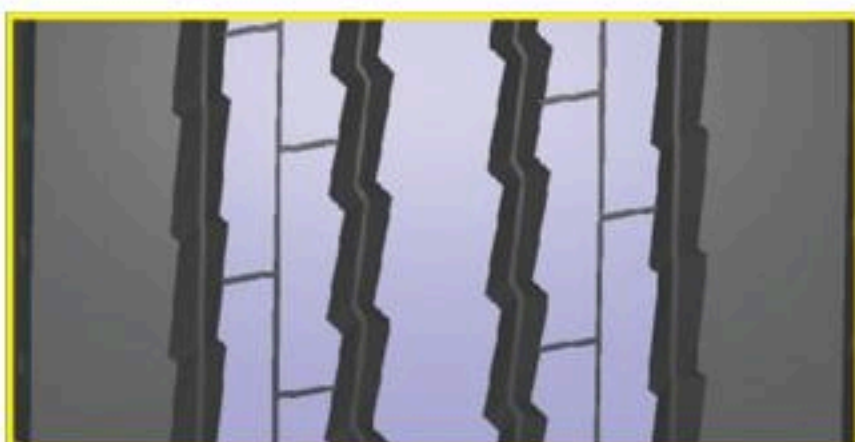


# ZTR max

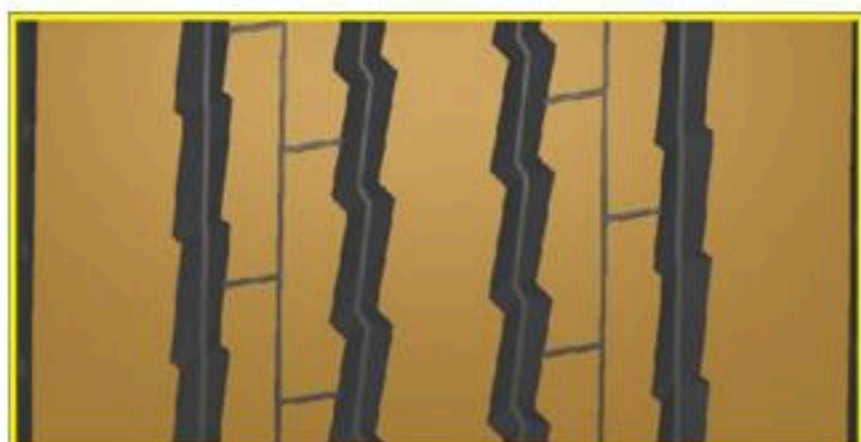
Application	Position
Regional	Trailer



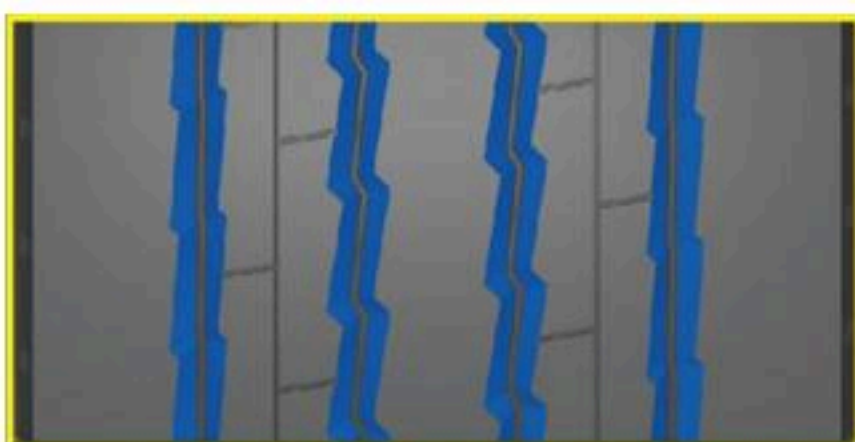
## Design Feature



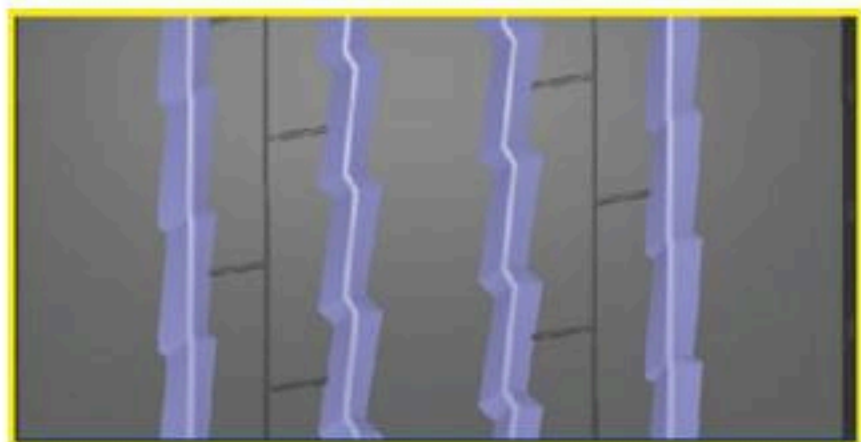
Continuous tread pattern greatly reduces rolling resistance.



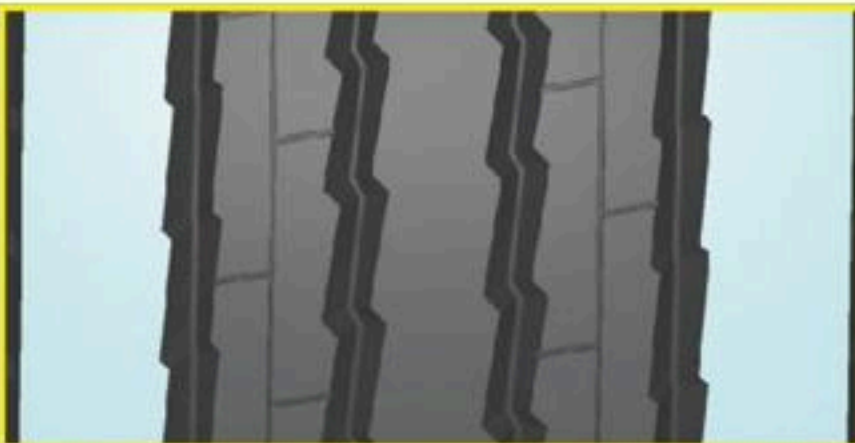
The wide tread increases the ground contact area and improves the grip.



Optimized groove wall angle effectively prevents stone and protect the body.



4 zigzag main grooves provide excellent traction and drainage performance for various road conditions.



The wide shoulder improves tread stability and handling, prevents uneven wear.

Size	PR	Load Index	Speed Symbol	Maximum Load Single	Maximum Load Dual	Maximum Inflation Pressure	Rim Width	Section Width	Overall Diameter	Tread Depth
				kgs	kgs	psi	inches	mm	mm	mm
235/75R17.5	18	143/141	J	2725	2575	127	6.75	233	797	12.5
385/65R22.5	20	164	K	5000		131	11.75	389	1072	15.0



# ZOR max

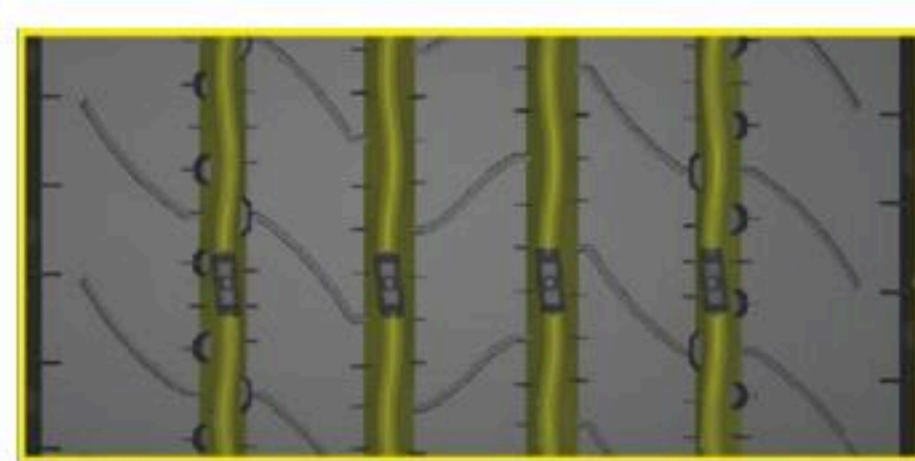
Application	Position
Regional	All Position



## Design Feature



Special notch design on shoulder groove wall improves traction on dry and wet.



Straight groove into curve groove wave design prevent stone and protect the body.



Shoulder sipes relieve shoulder pressure, prevent irregular wear and prolong tread life.



5-rib pattern design can improve handling and mileage performance.

Size	PR	Load Index	Speed Symbol	Maximum Load Single	Maximum Load Dual	Maximum Inflation Pressure	Rim Width	Section Width	Overall Diameter	Tread Depth
				kgs	kgs	psi	inches	mm	mm	mm
215/75R17.5	16	135/133	L	2180	2060	123	6.00	211	767	12.5
265/70R19.5	16	140/138	M	2500	2360	112	7.50	262	867	14.5
255/70R22.5	16	140/137	L	2500	2300	120	7.50	255	930	14.0



# ZTR1 max

Application	Position
Regional	Trailer



## Design Feature



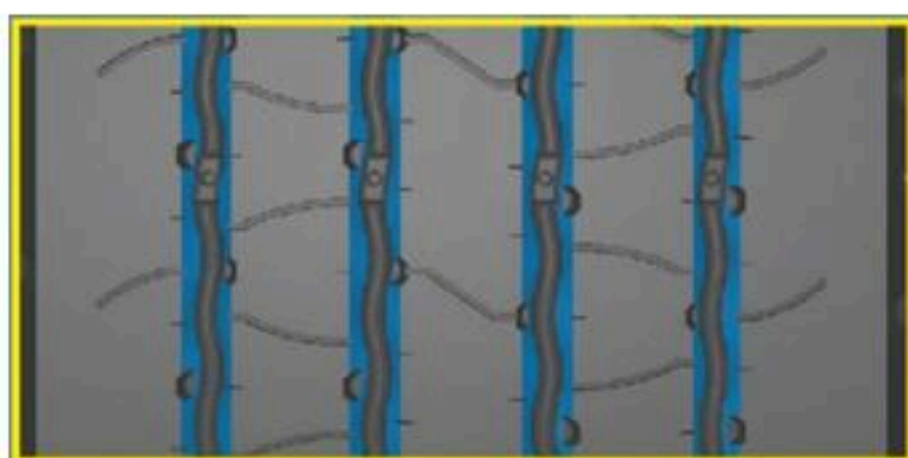
The wide visible main groove effectively drains water and facilitates wet braking and traction performance.



Wide and solid shoulder design improve mileage and handling.



Straight groove and 5-rib design help to even wear and reduce rolling resistance.



The wave groove wall design effectively prevents the stone and improves the pattern stiffness.

Size	PR	Load Index	Speed Symbol	Maximum Load Single	Maximum Load Dual	Maximum Inflation Pressure	Rim Width	Section Width	Overall Diameter	Tread Depth
				kgs	kgs	psi	inches	mm	mm	mm
11R22.5	16	146/143	L	3000	2725	120	8.25	279	1054	10.3

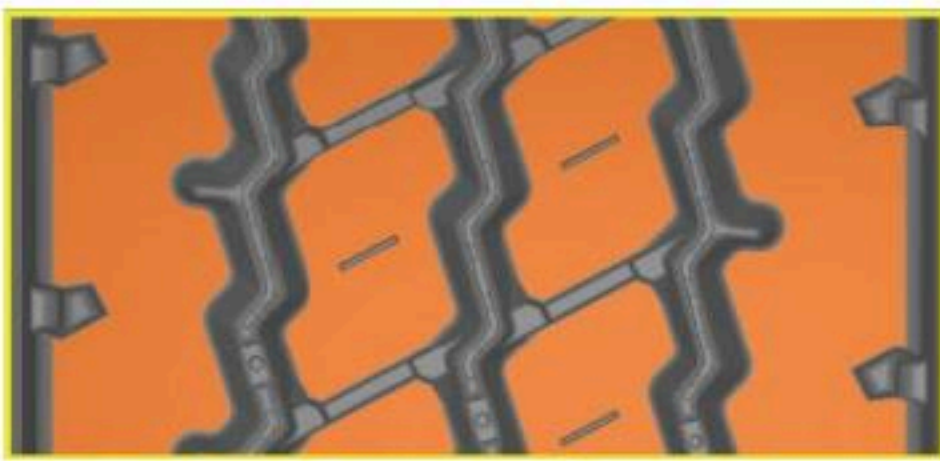


# ZOM max

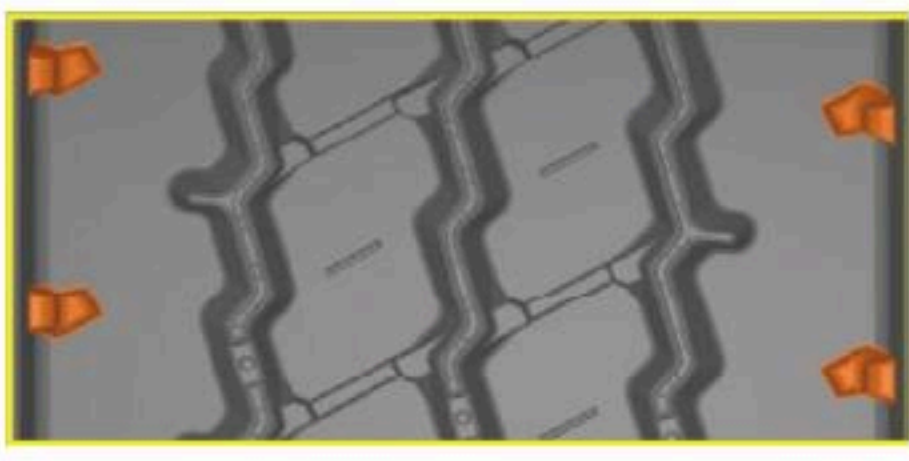
Application	Position
Mixed	All Position



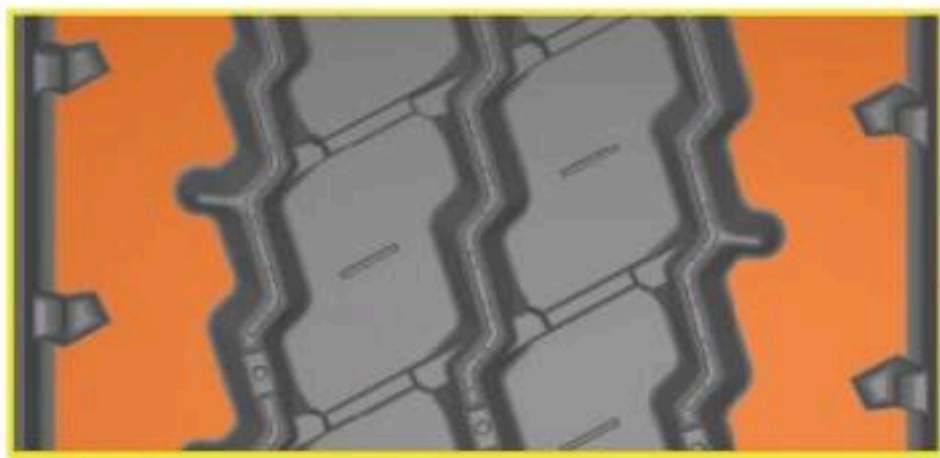
## Design Feature



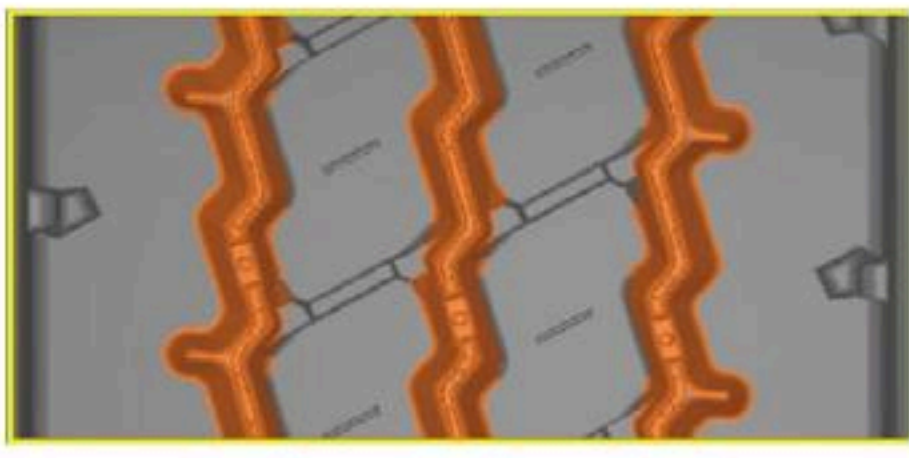
High-contact tread ensures good driving performance on mileage and muddy surfaces.



Semi-open shoulders provide excellent traction and wet grip.



Solid and wider shoulder ribs provide better tread stiffness, resulting in increased mileage.



V-shaped groove can effectively prevent stone, protect the casing and prolong the service life.

Size	PR	Load Index	Speed Symbol	Maximum Load Single	Maximum Load Dual	Maximum Inflation Pressure	Rim Width	Section Width	Overall Diameter	Tread Depth
				kgs	kgs	psi	inches	mm	mm	mm
11R22.5	16	146/143	L	3000	2725	120	8.25	279	1054	16.4
315/80R22.5	22	161/157	K	4625	4125	131	9.00	312	1076	15.9



# ZOM1 max

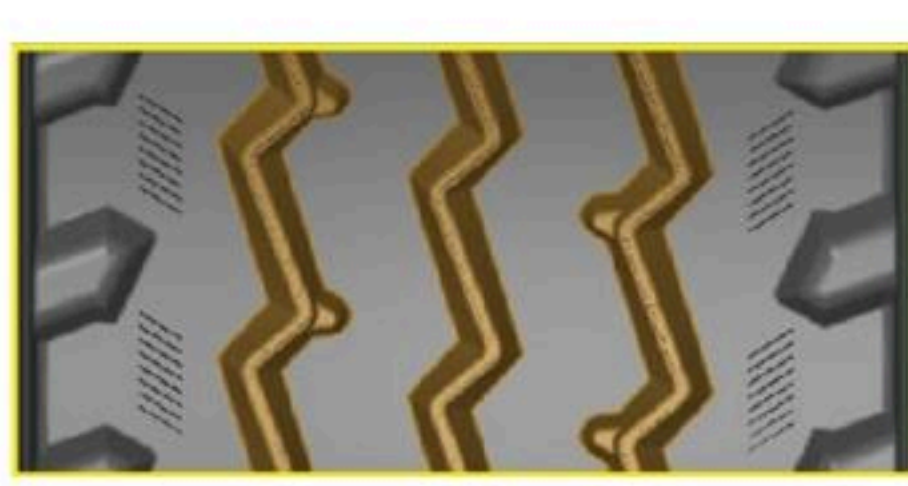
Application	Position
Mixed	All Position



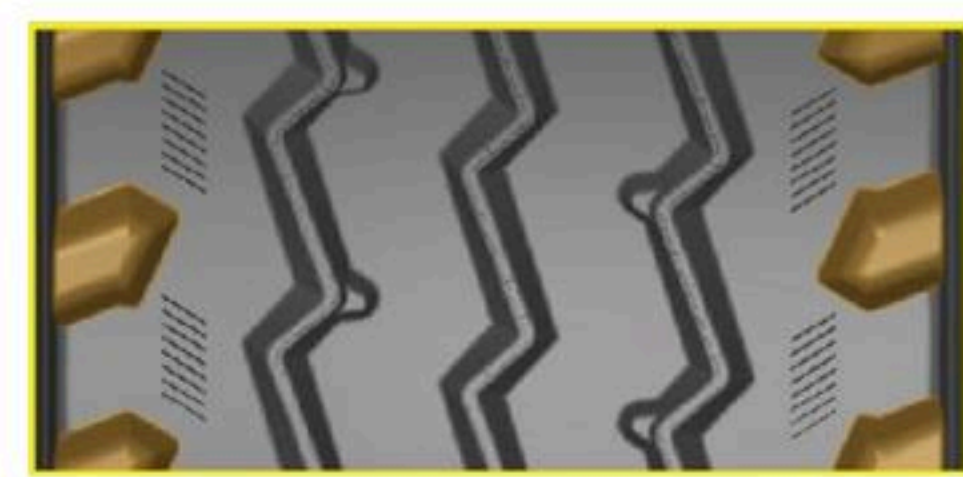
## Design Feature



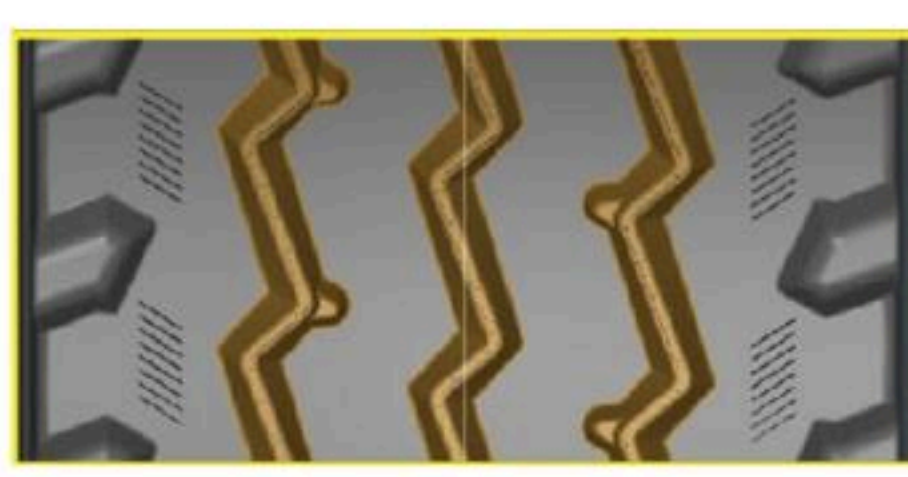
Rugged four-rib design with special groove shape to combat stone retention for long mileage and retreadability.



V-Channels and groove bottom protectors defend the casing against stone retention and stone-drilling.



Shoulder lugs provide grip and reduce the tread heat, prolong the life of the tread.



Zigzag groove design for true all-position use.

Size	PR	Load Index	Speed Symbol	Maximum Load Single	Maximum Load Dual	Maximum Inflation Pressure	Rim Width	Section Width	Overall Diameter	Tread Depth
				kgs	kgs	psi	inches	mm	mm	mm
315/80R22.5	20	156/150	K	4000	3350	123	9.00	312	1076	15.9
325/95R24	22	162/160	K	4750	4500	123	9.00	325	1228	17.0



# ZOM2 max

Application	Position
Mixed	All Position



## Design Feature

	Pattern block design and edges provide traction for both on and off application use.		The wide tread and deep grooves ensure high mileage.
	Open shoulder blocks with tie-bars prevent irregular wear and provide excellent traction performance in on-off road conditions.		Stone ejector in the middle of the main grooves prevents stone drilling.

Size	PR	Load Index	Speed Symbol	Maximum Load Single	Maximum Inflation Pressure	Rim Width	Section Width	Overall Diameter	Tread Depth
				kgs	psi	inches	mm	mm	mm
385/65R22.5	20	164	K	5000	131	11.75	389	1072	15.2

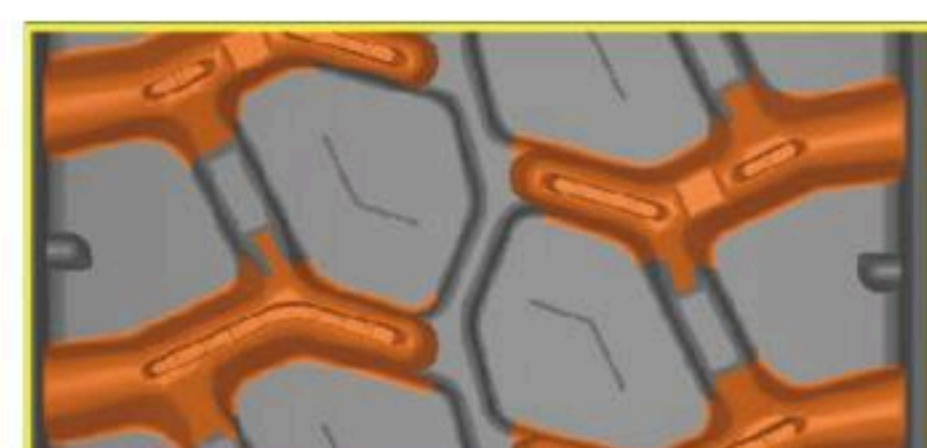


# ZDM max

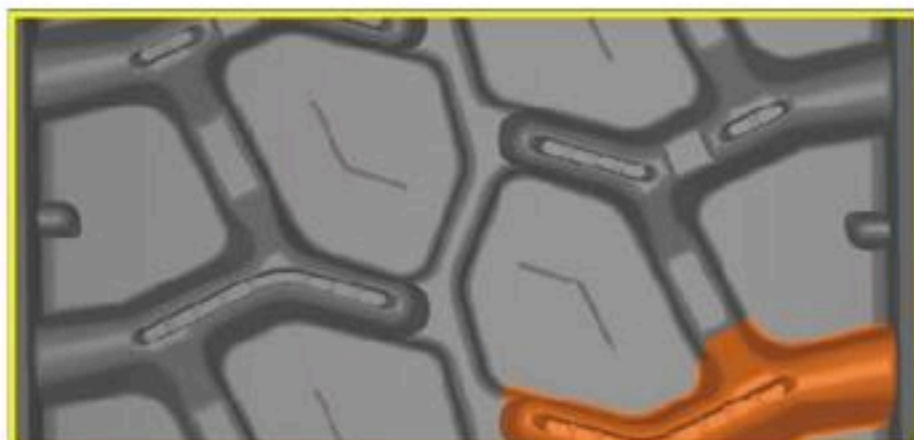
Application	Position
Mixed	Drive



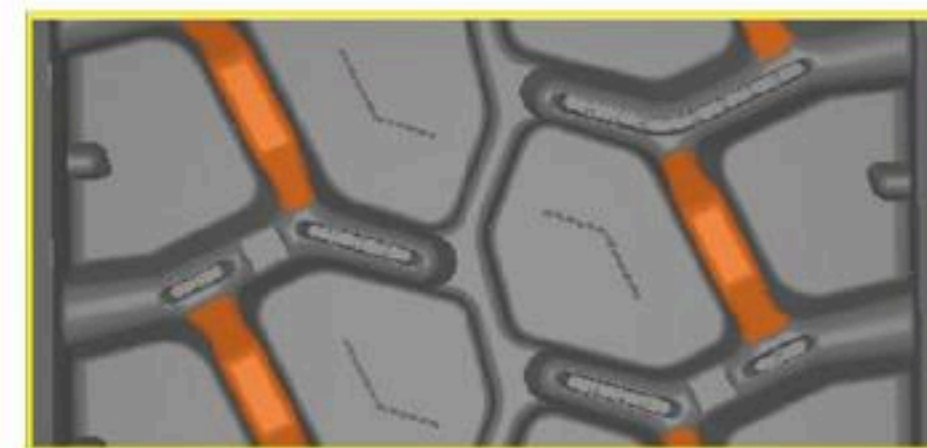
## Design Feature



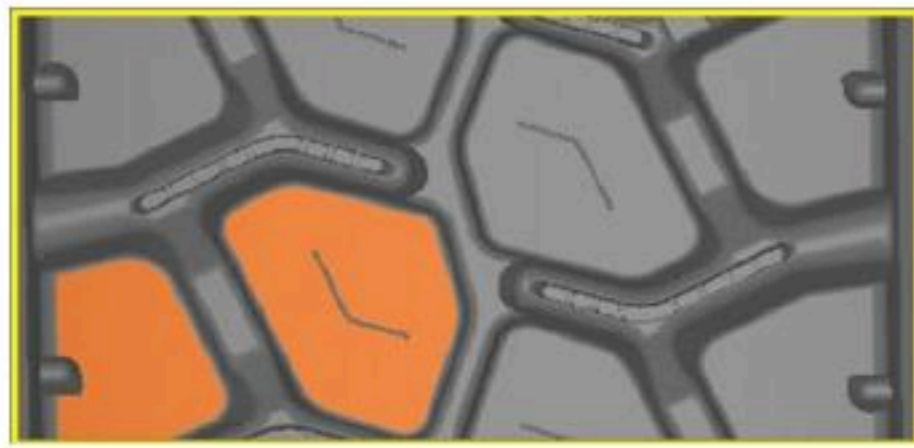
Aggressive lug pattern design provides strong traction on or off the road.



Deep grooved design extends tyre life and provides superior traction.



The intermediate interblock tie-bar ensures excellent straight driving performance and prevents the impact dispersion of the blocks, thereby improving the durability of the tyre.



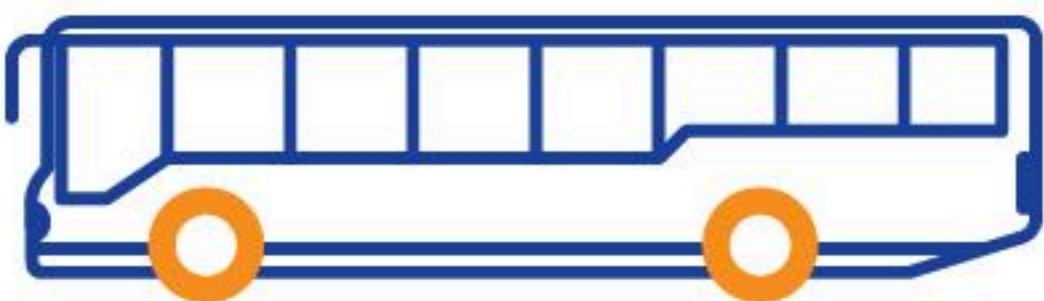
Large tread block design provides good cut and penetrations resistance.

Size	PR	Load Index	Speed Symbol	Maximum Load Single	Maximum Load Dual	Maximum Inflation Pressure	Rim Width	Section Width	Overall Diameter	Tread Depth
				kgs	kgs	psi	inches	mm	mm	mm
11R22.5	16	146/143	L	3000	2725	120	8.25	279	1054	22.2

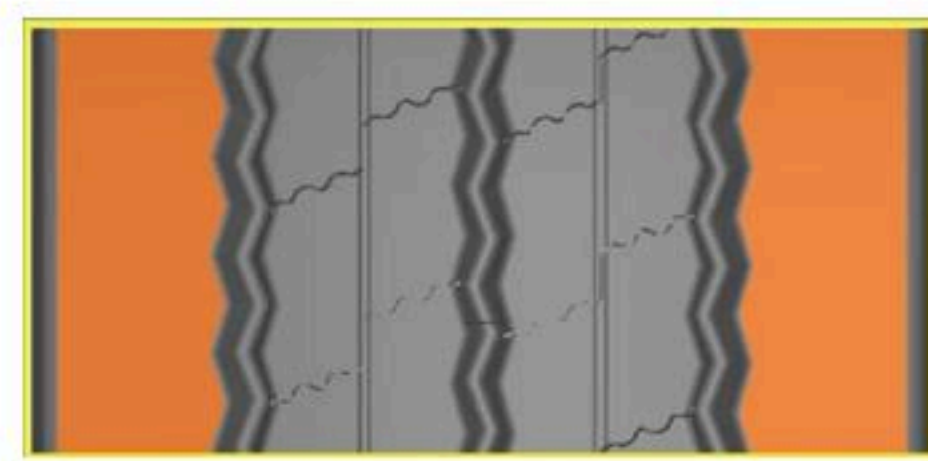


# ZOU max

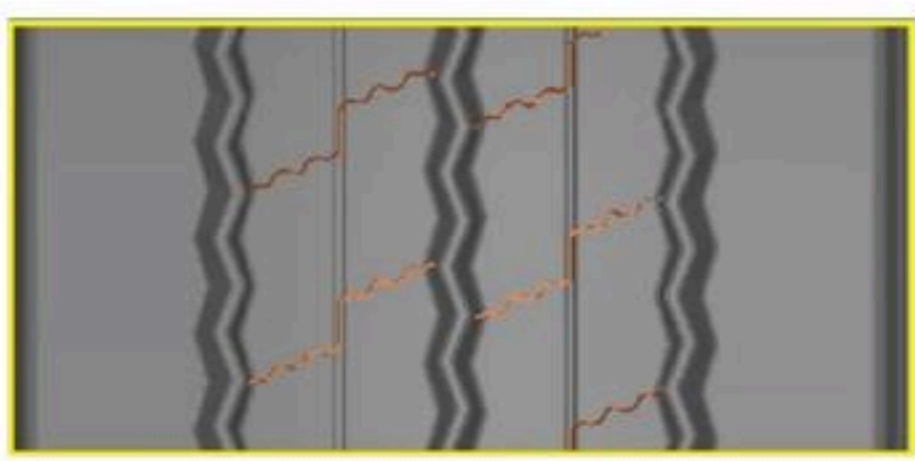
Application	Position
City Bus	All Position



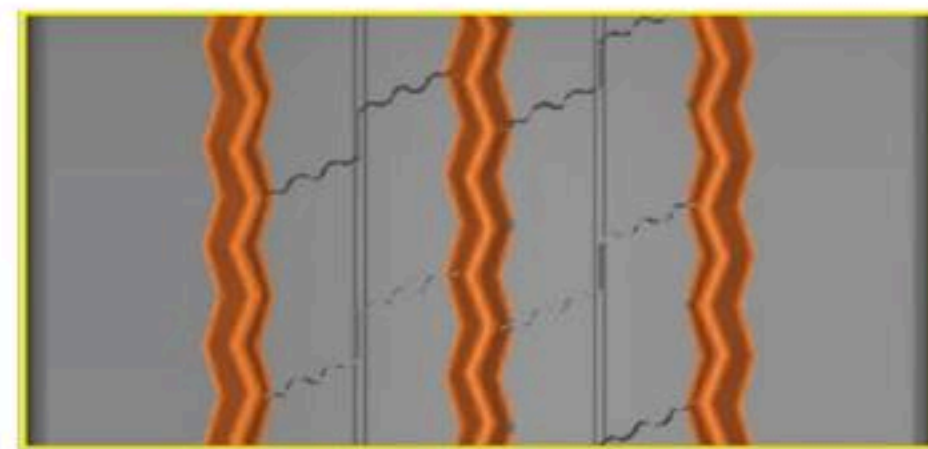
## Design Feature



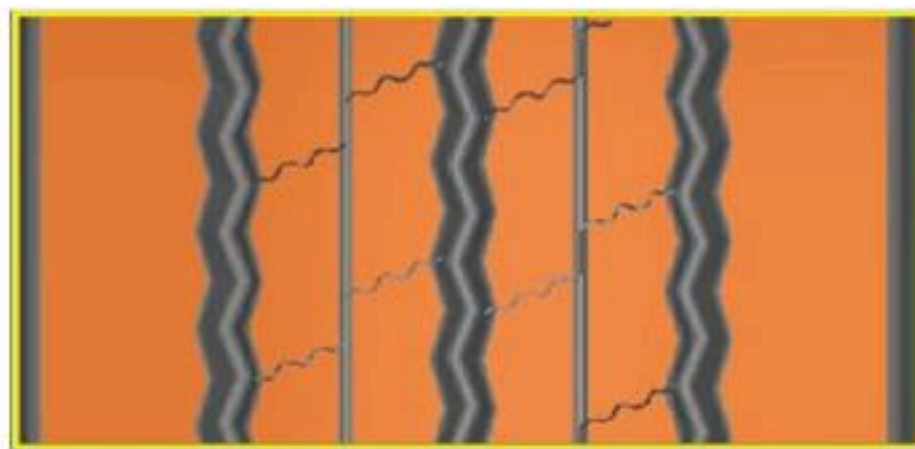
Optimized shoulder rib design improves handling and driving stability.



Optimized block pattern geometry ensures better traction and even wear.



Zigzag grooves together with an optimal block arrangement provide an improved traction performance.



Wide tread blocks increase the rigidity of the tyre and increase the range while reducing rolling resistance.

Size	PR	Load Index	Speed Symbol	Maximum Load Single	Maximum Load Dual	Maximum Inflation Pressure	Rim Width	Section Width	Overall Diameter	Tread Depth
				kgs	kgs	psi	inches	mm	mm	mm
275/70R22.5	18	152/149	J	3550	3250	131	8.25	276	958	18.0





Jebel Ali Free Zone (South)  
P.O.Box: 262176, Dubai, U.A.E., Ph: +97148073626

[www.zeetex-mea.com](http://www.zeetex-mea.com)

[www.zafco.com](http://www.zafco.com)



Zafco



@zafcoglobal



@ZafcoGlobal



ZAFCO